

**Submittal Data: GWH30LB-D3DNA3G** 30,000 BTU/H LOMO 18 Wall Mounted Heat Pump

Job Name: \_\_\_\_\_ Location: \_\_\_\_\_ Date: \_\_\_\_\_

Purchaser: \_\_\_\_\_ Engineer: \_\_\_\_\_

Submitted to: \_\_\_\_\_ For:  Reference  Approval  Construction

Unit Designation: \_\_\_\_\_ Schedule No.: \_\_\_\_\_

**GENERAL FEATURES**  
 -Compact and Quiet Design  
 -High Efficiency DC Inverter Technology  
 -Wireless Remote with LCD Display  
 -Comfortable Sleep Mode  
 -Intelligent Defrost  
 -Able to Cool at Low Temperature of -18°C (0 ℉)  
 -Able to Heat at Low Temperature of -25 °C (-13 ℉)  
 -All models are with electric heater band



**System Ratings**

<b>Cooling</b>	
Rated Capacity	28,000 BTU/H
Capacity Range	9,485.36-30,025.6BTU/H
Power Input	2,700 W
SEER	18
EER	10.37

<b>Heating at 47° F</b>	
Rated Capacity	28,400 BTU/H
Capacity Range	9,997-32,994 BTU/H
Power Input	2,800 W
HSPF	9
COP	10.14

<b>Operating Range</b>		
Cooling	(Max)	(46 C)
	(Min)	(-18 C)
Heating	(Max)	(24 C)
	(Min)	(-25 C)

<b>Power Supply</b>	
Normal Operational Voltage	220 V, 1 Phase, 60 Hz
Voltage Range	187-253 V
Interconnecting Area of Power Cable Conductor	12 AWG
Rated Current	17 A
MCA	20 A
MOCP/Breaker Size	30 A

**Indoor Unit Data**

<b>Fan Motor</b>	Output Power	70 W
	RLA	0.4 A

<b>Speed</b>	
Cooling Speed	1350/1150/950/850 r/min
Heating Speed	1350/1200/1000/800 r/min

<b>Sound Level</b>	
Sound Pressure Level	37-51 dB (A)
Sound Power Level	47-61 dB (A)

<b>Dimensions &amp; Weights</b>	
Unit Dimensions (LxHxD)	53.15 × 12.84 × 9.62 in
Weight (Net/Shipping)	41.9/51.82 lbs

**Outdoor Unit Data**

<b>Compressor</b>	DC Inverter Driven Rotary	
<b>Refrigerant Type</b>	R410A	
<b>Fan Motor</b>	Output Power	120 W
	Fan Motor Speed	795 rpm

<b>Sound Level</b>	
Sound Pressure Level	62 db(A)
Sound Power Level	72 db(A)

<b>Dimensions &amp; Weights</b>	
Unit Dimensions (LxHxD)	38.58 × 31.10 × 16.81 in
Weight (Net/Shipping)	154.35/165.38 lbs

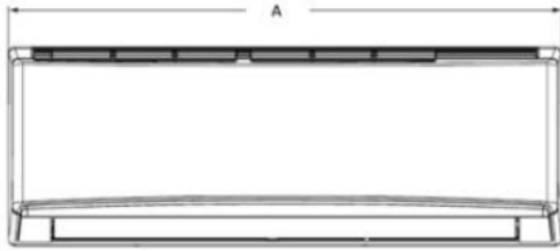
<b>Refrigerant Piping Data</b>	
Gas Pipe Size (OD)	5/8-in
Liquid Pipe Size (OD)	1/4-in
Connection Method	Flared
MAX Refrigerant Pipe Length	98.4-ft
MIN Refrigerant Pipe Length	24.6-ft
MAX Refrigerant Pipe Height Difference	32,8-ft



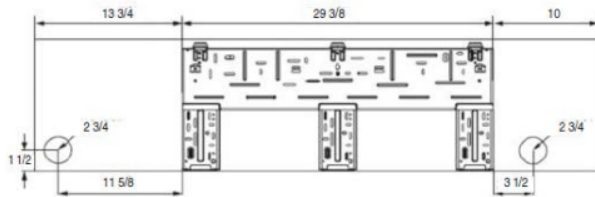
### INDOOR UNIT DIMENSIONS

Model No: GWH30LB-D3DNB2G/I

Units: inch



Dimensions	
A	53.1
B	12.8
C	10.0



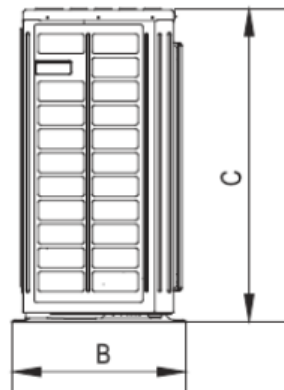
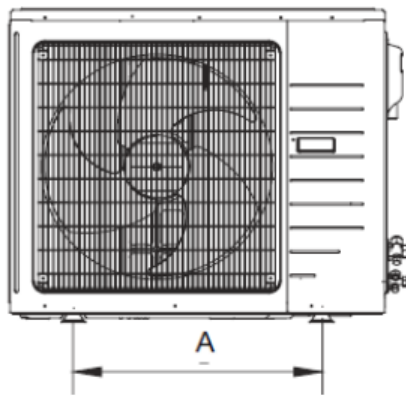
Weight (Net/Gross) 41.9/51.8 lbs

Liquid Line Valve	1/4-in OD Flared
Gas Line Valve	5/8-in OD Flared
Drain Connector	5/8-in OD

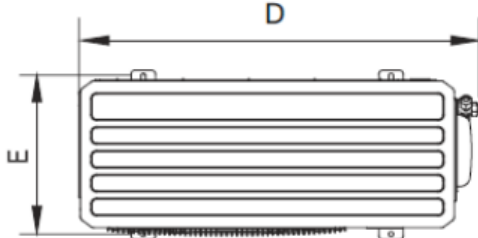
### OUTDOOR UNIT DIMENSIONS

Model No: GWH30LB-D3DNA3G/O

Units: inch



Dimensions	
A	24.0
B	16.8
C	31.1
D	38.6
E	14.5



Weight (Net/Gross) 154.3/165.4 lbs

Liquid Line Valve	1/4-in OD Flared
Gas Line Valve	5/8-in OD Flared

